



BLUE WAVE®

ROPE END FITTING

- New innovative product
- More opportunities to benefit from UHMWPE and UHMW ropes
- Unique and slim design
- Easy and viable to use and assemble
- AISI316L stainless steel, and hard anodized aluminium materials
- Easy to fit to existing rigging screws and deck fittings
- Backed by a full range of high quality rigging hardware



Community Design Registration 14/6 2017
design reg. -004048098-0001



"KEEP IT SIMPLE"



House

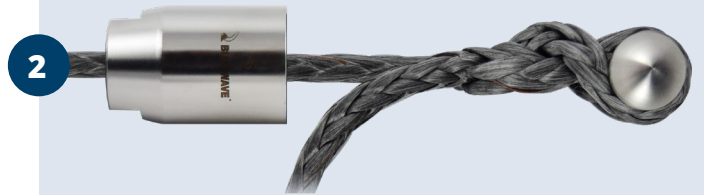
Bone

Eye



1

Slide the housing over the rope



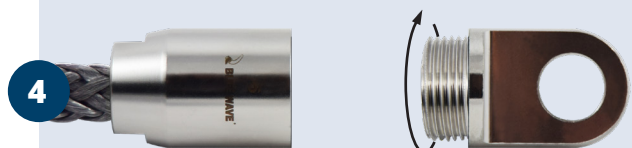
2

Splice around the bone - following your rope suppliers general splice guidelines



3

Pull spliced bone back in housing



4

Screw the parts together - threads can be locked with Loctite